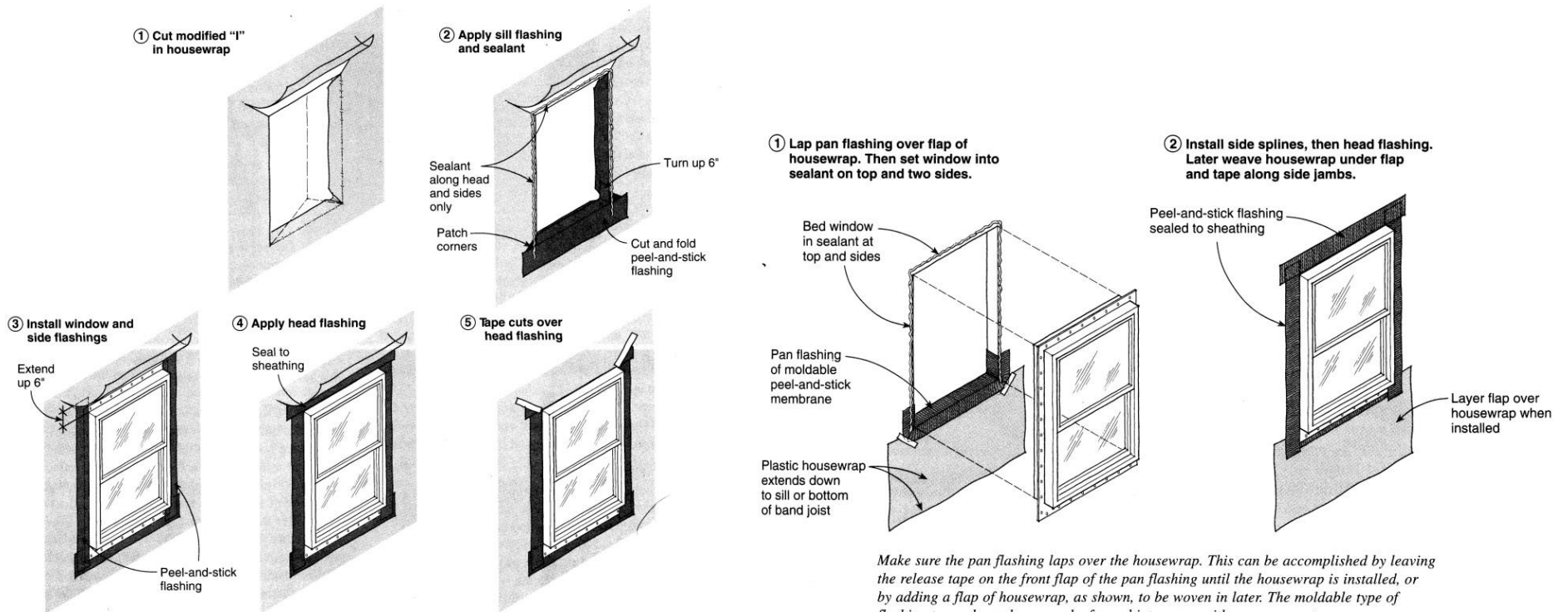


Window Installation Guidelines



Make sure the pan flashing laps over the housewrap. This can be accomplished by leaving the release tape on the front flap of the pan flashing until the housewrap is installed, or by adding a flap of housewrap, as shown, to be woven in later. The moldable type of flashing tape, shown here, can be formed into a pan with no corner cuts.

The critical components for a weatherproof installation are the head flashing and sill pan. When the siding is installed, do not caulk the horizontal joints above and below the window, which must be left open so trapped water can drain freely.

After Sheathing Membrane (Housewrap) is installed

Before Sheathing Membrane (Housewrap) is installed

This pamphlet has no legal status and cannot be used as an official interpretation of the various codes and regulations currently in effect.

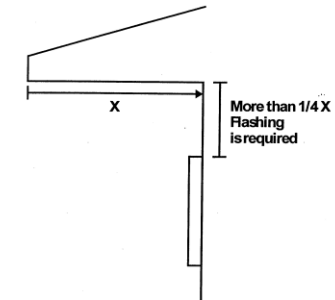
Revised 2/19/15

City Of Summerside-Technical Services

Window Installation Guidelines

REQUIRED FLASHING OVER OPENINGS

Section 9.27.3.8.(3) of the National Building Code requires flashing to be installed over all exterior wall openings where the vertical distance from the bottom of the eve to the top of the trim is more than one quarter of the horizontal overhang of the eve.



Flashing Shall:

Extend at least 50mm (2 inches) upward underneath the sheathing membrane.

Have a slope of not less than 6% towards the exterior of the building.

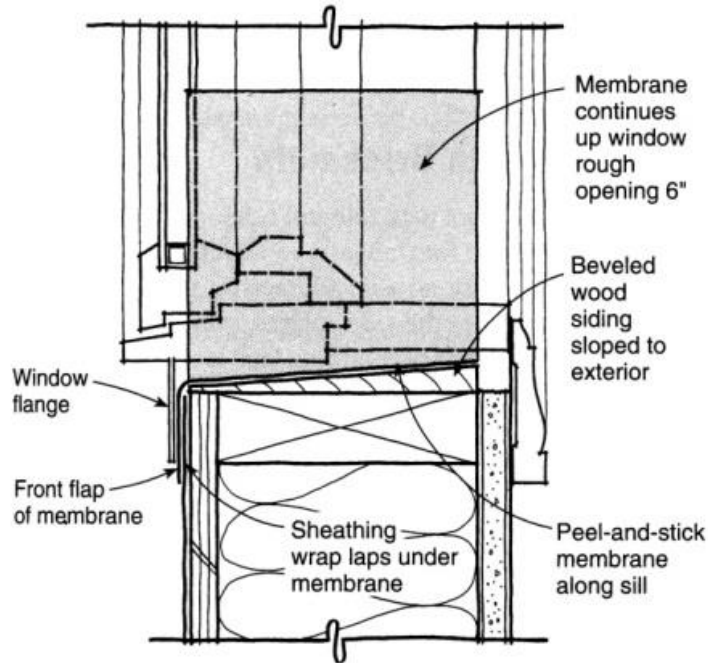
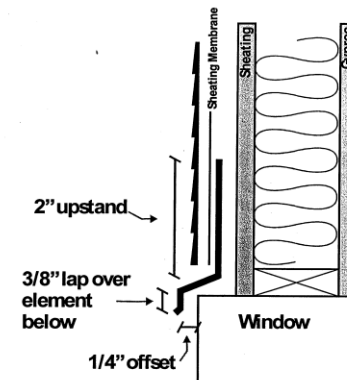
Terminate at each end with an end dam with a minimum height of 25mm (1 inch).

Lap not less than 10mm (3/8 inch) over the building element below.

Incorporate a drip offset not less than 5mm (3/16 inch) outward from the outer face of the building element below.

Flashing Materials Shall Consist Of:

- 1.73 mm thick sheet lead
- 0.33 mm thick galvanized steel
- 0.46 mm thick copper
- 0.46 mm thick zinc
- 0.48 mm thick aluminum
- 1.02 mm thick vinyl



Slope the rough sill toward the exterior using a piece of beveled wood siding. Next, form a pan flashing from a 9-inch-wide strip of peel-and-stick flashing about one foot longer than the rough opening. A cut at each corner allows the front flap to fold down and side flaps to fold up the sides of the opening. Membrane patches are used to bridge any gaps at the bottom corners.

This pamphlet has no legal status and cannot be used as an official interpretation of the various codes and regulations currently in effect.

Revised 2/19/15

City Of Summerside-Technical Services